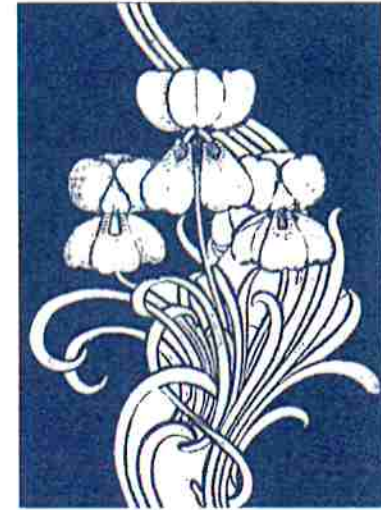


more green thumbs

MT. LEBANON
PUBLIC
LIBRARY

28th Annual Mt. Lebanon Garden Tour



Sunday, July 8, 2018
11 am - 4 pm

**Tickets \$15 in advance,
\$20 on tour day**

**Stardust Swing;
An Evening in the Garden**

Saturday, July 7, 2018
7 - 9 pm

Tickets \$30

For more information
call 412-531-1912



Home
Happens
Here.™

Howard Hanna Real Estate Services

is proud to support

The Mt. Lebanon Public Library 2018 Garden Tour

and their mission to provide informational resources, programs, and services for the personal enrichment, education, and enjoyment of all citizens and for the betterment of the community.

Call Your Howard Hanna Agent Today

or 412-561-7400

HowardHanna.com/HHH



Real Estate Mortgage Title Insurance

BLACK LAMB CONSIGNMENTS

"Where discerning buyers and sellers of fine home furnishings come together"



323 E MAIN STREET, CARNEGIE, PA 15106

412-276-6699

www.blacklambconsignments.com

ADVANCED **H** EALTHCARE. QUALITY OUTCOMES.



ST. CLAIR ACCEPTS ALL
MAJOR INSURANCES

St. Clair Hospital is a highly honored, independent, acute-care medical center with 550 leading physicians, offering advanced, high-quality care in multiple specialties, including heart, vascular, oncology, orthopedics, spine, mental health, women's and children's services, stroke care, and more. Consistently rated by independent evaluators as one of the country's 100 Top Hospitals®. St. Clair is a proven leader in patient safety, clinical outcomes, patient satisfaction, and value. Driven by a culture of continuous improvement, St. Clair earned the region's only "A" grade in patient safety, and ranks in the top 2 percent in the nation in patient satisfaction.

1000 BOWER HILL ROAD • MT. LEBANON, PENNSYLVANIA 15243 • 412.942.4000 • STCLAIR.ORG

Sources: Truven Health Analytics; Care Chex; Press Ganey; Leapfrog Group

MT. LEBANON
PUBLIC
LIBRARY
:more

16 Castle Shannon Blvd., Pittsburgh, PA 15228-2252 • (T) 412-531-1912 (F) 412-531-1161

July 8, 2018

Dear Library Friends,

Welcome to the 28th Annual Mt. Lebanon Public Library Garden Tour!

We were so delighted to have our garden included in last year's tour that we returned this year as coordinators. In chairing this event, we scoured the community for the most beautiful landscapes. The result? Seven gardens and two special surprises from the Mt. Lebanon Arboretum and the Mt. Lebanon Nature Conservancy. We hope that as you stroll through the many different gardens and landscapes you'll find inspiration for your own greenspace. And don't hesitate to ask the owners about the plants or for advice!

New this year are food trucks in the library parking lot, including Bella Christie Sweet Boutique (the name says it all). The plant sale returns along with the gardening experts ready to provide free consultations. The Book Cellar Used Book Store, on the library's lower level, is offering some special promotional deals as well.

As with the previous 27 Garden Tours, the library will use the proceeds for programming, improvements to the building, and for books, audio-visual materials, educational DVD's, and electronic resources.

We wish to thank the gardeners for graciously sharing their gardens with us (and you!), the Garden Tour Committee for their hours of work, the volunteers whose efforts make each tour a success, the advertisers, gardening experts, and the tour sponsors.

Last—but certainly not least—we thank you for supporting the 28th Annual Mt. Lebanon Public Library Garden Tour. Your support ensures Mt. Lebanon Public Library will continue to provide excellent services for our community, both now and in the future.

Sincerely,

Noelle Conover *David Conover*

Noelle and David Conover

Garden Tour Co-Chairs



Special Thanks to...



Our Gardeners

Rob & Becky Henninger
Leslie & Dave Hughes
Anna Roman & George Michalopoulos
Barbara & William Sabourin
Mary Starusko
Nancy & Michael Weismann
The Mt. Lebanon Arboretum
The Mt. Lebanon Nature Conservancy
The Mt. Lebanon Public Library volunteer gardeners

Garden Tour & Stardust Swing Contributors

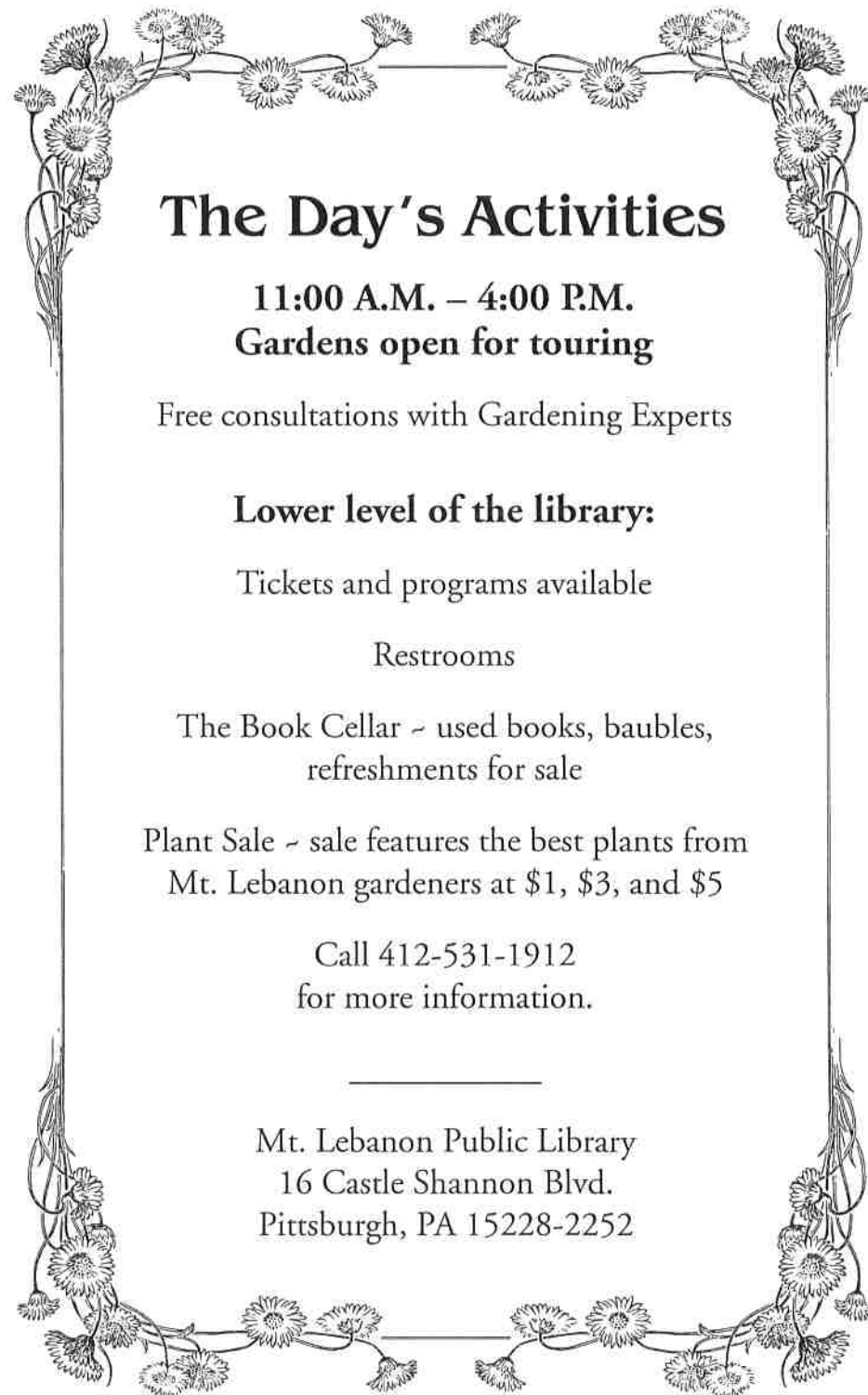
Our generous donors
Our Program Book Advertisers
Bethel Park Printing
Our Raffle Basket Donors
Our Dedicated Volunteer Garden Hosts/Hostesses
Our Gardening Experts
Our Plant Sale Donors and Volunteers
Banksville Express

Garden Tour & Stardust Swing Committees

Garden Tour Committee
Noelle and David Conover, Garden Tour Co-chairs
Garden Tour Committee Members:
Linda Binek, Jane Broeren, Mary Lou Vanzin,
Marina Nielsen
Stardust Swing Committee
Robyn Vittek, MA Jackson, Marina Nielsen

Library Board of Trustees

Hillary Lohr, President	Noelle Conover
Evan Jones, Vice President	William Pope
Marcia Taylor, Treasurer	Eve Reynolds
Corey S. Flynn, Secretary	



The Day's Activities

11:00 A.M. – 4:00 P.M.

Gardens open for touring

Free consultations with Gardening Experts

Lower level of the library:

Tickets and programs available

Restrooms

The Book Cellar ~ used books, baubles,
refreshments for sale

Plant Sale ~ sale features the best plants from
Mt. Lebanon gardeners at \$1, \$3, and \$5

Call 412-531-1912
for more information.

Mt. Lebanon Public Library
16 Castle Shannon Blvd.
Pittsburgh, PA 15228-2252

Benefactors

Jill & Chuck Brodbeck
Dan & Michele Bursick
Jim & Kristin Henson
Barbara Logan
Doris & Ford McBeth

Patrons

Anonymous
Louanne Baily
Marianne Bokan-Blair &
David Blair
Mary Beth Dougherty
Dorothy M. Fels
Joe & Claudette Gray
Mike & Margaret Hooton
Eileen Jacobs
Karen Kanell
Mr. & Mrs. Martin Keib
Windle & Kathleen Mook
Gary & Cherie Moshier
Dr. Nancy Z. Nelson
Michael & MaryAnn Ragan
Eve Reynolds
Lori & Bob Shure
Gail & Wilfried Sieg
Sue Beal Smith
Bonnie & Tom VanKirk
Jon & Carol Walton
Elaine Wertheim

Sponsors

Anonymous
Rick & Bonnie Beran
Bunny & Bob Bragdon
Barbara & Henry Folb
Richard & Donna Garlitz
Norma Jean & John Graybill
Dr. & Mrs. David McKibben
Eleanor & Ed Nemeth
Edward & Joan Rotheram
Robert & Sally Skillen
Anne & Sam Zacharias

Donors

Nellie Ambrose
Lydia Balogh
David & Linda Berry
Dee Borman
Felix Caste
Elizabeth & Christopher Donohue
Claire Emery
Betty Fischer
Martha & Francis Groll
Andrew & Jennifer Haberberger
Kathleen L. Hammer
W. R & V.F. Judd
Mary Adele & John Krolkowski
Guinevere R. Mabunay
Kathy Mays
Renee L. McEwen
Wilma McNeese
Patricia K. Nichols
Lea Ann & Dale Ostergaard
Linda Potter
Suzanne Powers
Caterina Provost
James & Karen Sheppard
Lin & Sol Toder

Raffle Basket Donors

A'Pizza Badamo	Mt. Lebanon Public Library Board of Trustees
Bartlett Tree Experts	National Aviary
Betsy's Ice Cream	Nemacolin Woodlands Resort
Linda Binek	Marina Nielsen
Bistro 19	Nulion Photography
Caliente Pizza and Draft House	Oil & Vinegar
Carnegie Museums of Pittsburgh	Potomac Bakery
Carnegie Science Center	Pittsburgh Botanic Garden
Clothes House Consignment	Pittsburgh Glass Center
Duck Donuts Pittsburgh	Pittsburgh Public Theatre
Eden's Market	Pittsburgh Steelers
Fresh Market	Pittsburgh Symphony Orchestra
Friends of the Mt. Lebanon Public Library	Scoops on Beverly
Gloria Jean's Coffee	Sesame Inn
Healthy Pet Products	Signatures
Heinz History Center	Dana Slizak
Houlihans	Snapology
Kid Ewe Knot	The Porch
Lily's Stitch Studio	The Saloon
Lebo Subs	Warhol Museum
Little Lake Theatre	Whole Foods
Lush	
Massage Envy	



*Proud to Support the
Mt. Lebanon Public Library Garden Tour*



BILL FEW ASSOCIATES
WEALTH MANAGEMENT

INVESTMENT MANAGEMENT

RETIREMENT PLANNING

ESTATE PLANNING

INSURANCE PLANNING

EDUCATION PLANNING

107 Mt. Nemo Pointe, Suite 200, Pittsburgh, PA 15227 • 740 Washington Road, Suite 100, Pittsburgh, PA 15228
412.630.6000 • 1.800.345.5939 • contactus@billfew.com • www.billfew.com



❖ *La te Da* ❖
SALON • SPA • DISTINCTIVE GIFTS

331 CASTLE SHANNON BLVD 412 343 0171
SALONLATEDA.COM

COLDWELL BANKER®

SUPPORTS THE MT. LEBANON PUBLIC LIBRARY



Katie Alberter



Hope Bassichis



Noel Bliman



Mary Lou Borchert



Rebecca Church



Donna Cillo



Barb Cusick



Jim Donahoe



John Geisler



Ken & Jackie Gerkey



Elaine Goldblum



Leigh Harkreader



Milo Hindman



Judy Hlister



Kathi Kernan



Jane Krauth



Peter Krells



Sandi Lamar



Maria Lane



Kim Lanphear



Julie Leslie



Ron Loncharich



Winnie McCann-Powers



Sally Morrison



Kerry Owens



Dora Rudick



Laura Simon



Diane Snyder



Brad Templeton



Carmela Viviano



Sandy Wiedt



Faith Willard



ColdwellBankerHomes.com/southhills

The South Hills Office | 1630 Washington Road | 412.833.5405

Real estate agents affiliated with Coldwell Banker Real Estate Services are independent contractor agents and are not employees of the Company. ©2018 Coldwell Banker Real Estate Services. All Rights Reserved. Coldwell Banker Real Estate Services fully supports the principles of the Fair Housing Act and the Equal Opportunity Act. Owned by a subsidiary of NRT LLC. Coldwell Banker and the Coldwell Banker Logo are registered service marks owned by Coldwell Banker Real Estate LLC. 350722P1_05/18



222 Washington Road, Pittsburgh PA 15216
Kurt J. Warmbein, Jr., Supervisor

412-531-5100

1008 Castle Shannon Blvd., Pittsburgh PA 15216
Shannon M. Barrett, Supervisor

Michael E. Englert, Pete A. Santore, Kurt J. Warmbein, Jr.,
Sarah McAlee, Shannon M. Barrett



Horhut
TREE EXPERTS

Board Certified
Master Arborists

ARBORIST SERVICES

- Consulting
- Tree and Shrub Pruning
- Tree, Shrub and Stump Removal
- Plant Healthcare
- Disease and Insect Management
- Fertilization
- Critical Root Zone Enhancement
- Tree Support Systems



412-855-2703



We Service The Greater Pittsburgh Area

400 Payne Hill Road • Jefferson Hills, Pa 15025

www.horhuttreetexperts.com

• THE OWNERS DESCRIBE THEIR GARDENS •



Mt. Lebanon Public Library Courtyard and Gardens

Mt. Lebanon Library's gardens lend grace and beauty to one of the most popular meeting places in Mt. Lebanon. The gardens began in 1999, when a group of volunteers began designing and installing the plants and hardscapes. The gardens opened to the public the following year.

The volunteer gardeners who continue to maintain the gardens have discovered that the care and feeding of the library's

greenspaces is a continual learning process. We are fortunate that many volunteers are Master Gardeners and/or have been involved in gardening activities all their lives. They are an experienced, enthusiastic team whose dedication has kept the library gardens attractive and healthy for almost two decades. New gardeners are welcome to join in the fun.

Something is blooming in the garden almost year round. In February/March, as the weather begins to warm, the red and yellow Witch Hazels appear. Ten months later, as winter looms, the colors of the native trees and shrubs—Redbud, White Dogwood, Pagoda Dogwood trees, the Red Twigged Dogwood and American Filbert Shrub, and the Sweet Pepper Bush—blaze forth.

In the Courtyard, a perennial fig tree mixes with herbs (Dill, Parsley, Marjoram, Oregano) and vegetables (Tomatoes, Kale, Eggplant) as dozens of fish dart in and around the pond's water plants (Blue Flag Iris, Rush, Cardinal flower, and Horsetails). A bench with metal frog legs encourages children to sit and watch the movement and giggle with delight.

Mingled among the native plants are a few non-natives that entice pollinators, including butterflies, bees, bumblebees, birds, beetles, and bugs. The milkweed attracts and feeds the endangered monarch butterfly.

Our perennials and trees include Blazing Star, Mt. Laurel, Bonset, Fragrant Clematis, Foamflower, Crimson Trumpet Vine, Wild Indigo, a varied group of shade loving Hostas, and the River Birch and Serviceberry trees.

To enjoy the gardens fully, walk the length of the library along Castle Shannon and then up the driveway to the upper parking lot. Then go inside the library to access the Courtyard.



Garden of
**Barbara & William
 Sabourin**
 409 Longridge Drive

We moved to Mt. Lebanon eleven years ago. We were so thrilled when we found a house that had plenty of space for gardening and was a clean slate ready to be planted. Imagine our surprise when we tried to put a shovel into the ground only to have it stopped by the hard clay.

Not giving up and as all good gardeners do we persevered and kept working and amending the soil until we had nice soft beds for our flowers and vegetables. We use French intensive garden methods in our vegetable beds which entail double digging the soil and then mounding it up. This allows the roots to grow deep. It also allows for close planting which keeps the soil shaded and moist and keeps the weeds down. We have many plants that attract bees and butterflies. We also compost and have a worm farm that contributes to the health of our garden.

Three years ago we put in a new patio which provided an opportunity to terrace the garden. As a result we had to dig new beds for the vegetables but we were undaunted because experience taught us how to go about it. The end result is really beautiful and we even have a fountain in one of the beds that has a flower for each of our three grandchildren.

We hope you will come share our garden. It is a truly bright and peaceful place to be.



Garden of
Mary C. Starusko
 410 Longridge Drive

My garden is a love story triad between Belgian block, creativity and good old fashioned "do-it-yourself," "get-your-hands-dirty" hard work and fun.

When I purchased my home 18 years ago, I deemed the backyard a complete "write-off disaster" where nothing could be done. How wrong I was! A friend with a lot of vision thought otherwise and suggested that some Belgian block might be a nice way to dress things up. It all flowed from there.

Belgian block can be hard to find and when you do find it, it's expensive. I started out with 25 that I found through the Pennysaver. I placed ads and found 50 here, another 25 there, and eventually found the Belgian block mother lode when I connected with a gentleman who literally dug up East Street on the North Side and had the evidence to prove it -- thousands of the precious, much-sought-after blocks stacked in his backyard. I found Belgian block heaven! I would be buying, hauling and slinging another 1,200. Four years later, the "disaster" garden boasted a patio, raised beds, walkways, garden borders and three vignette areas featuring two fountains and a charming seating area -- all created with Pittsburgh's historical Belgian blocks. Now the backyard garden is the "lady of the manor" and she reigns supreme! Oh, and by the way, there are also plants and flowers! :)

Come, see, enjoy! I'll be sipping a chilled Chardonnay in the backyard while I anxiously await your arrival!



Garden of
Anna & George
Michalopoulos
172 Lancaster Avenue

It is July and you have missed the riot of Daffodils that burst along the beds in early Spring, but although they are gone, so much more is in bloom now.

As you walk up to the front door you will notice Magic Carpet Spirea, on one side of the walkway and Amber Carpet roses and Variegated Liriope on the other. Anna loves to add in many annuals and a mix of perennials to her beds every year as well. The lovely Dragon Lady Hollies on either side of the front window flank Boxwoods, reaching up high, adding interest in the winter. You will see other plants such as Drift Roses, grasses, Little Henry's and Hydrangeas here. If you notice a touch of "Jurassic Park" (make sure to take note of the pot by the garage) that would be due to annuals added in such as Elephant Ears and King Tut, a Papyrus Grass. The garden continues to meander down the right side of the house with a few specimen plants, Arborvitae, Brandywine Viburnum, including irises, Dwarf Butterfly bushes etc.

Once in the back yard, to the left you will walk down a few stairs and mixed colors of drift roses pop with color among boxwoods, little lime hydrangeas, perennials and annuals just added in May. The patio has a cut out just for the Japanese Maple and below it you may even see faeries flitting around in their garden if you are quiet and quick! The water feature, rocking chairs, and potted plants all make this backyard inviting and make you want to sit a while and relax.



Garden of
Nancy and Michael
Weissman
170 Lancaster Avenue

Although we don't have a large front yard we enjoy the hardy red knock out roses, the Japanese Maple with variegated liriope and juniper below. The Weeping Cherry and the annual New Guinea Impatiens are planted below every year. We love our quaint back garden because of its cozy feel. The arborvitae that we planted when we moved in have now matured & give us privacy.

Because of a problem with flooding during strong summer thunderstorms, we installed a decorative stone river across the garden. It was designed to allow the water to flow down the hill during a storm, tying in with our neighbor's stone river, then draining down to a common area in our development. Besides its functionality, our "river" adds a pretty accent to the garden. Each season brings something new. In spring the white and purple Allium and yellow daffodils take center stage and Miss Kim Lilacs give off their lovely scent. In summer, we especially enjoy the beds of pink drift roses, spreading liriope, Japanese Maple and the potted annual pots. By the end of July everything seems to be in full bloom including the little lime Hydrangeas, their large cones turning from pale green to bright white and then with a touch of pink. Later in the season, the ornamental trees begin wearing their autumn colors. By early November we are sad, but know it's time to put away our patio furniture. Gazing through our windows at our garden in winter makes us look forward to our next lovely spring!



Garden of
Leslie and David Hughes
 168 Lancaster Avenue



Dave's love of Bamboo for its texture, deer resistance, privacy, and tranquility sets the tone for this yard. The Japanese Maple, Karl Forester grasses, pinky winky, climbing and little lime hydrangeas add textures to the garden.

Snuggled into the plants on the hill the smiling Buddha calls for calmness. With Liatris and caradonna salvia adding a blend of purple, the unusual scarlet color of the carpet roses adds a needed pop of color. Variagated lirioppe and Chardonnay Pearl Deutzias with their almost-lime color work with the Japanese Forest Grass to fill out this garden. Stones throughout, along with the sweet sound from the small water feature add even more asian influence. Walking around the side of the house with elongated stepping stones, you will see Quickfire hydrangeas, Japanese Painted and ghost ferns, Variegated Sweet Irises, Green Tower and North Star boxwoods and more rocks for design and functionality.

Leslie's love of making pots on the patio and front of house creates a warm welcoming feeling. Walk around to the front and you will see My Monet Sunset Weigelas, north star boxwoods, otto luykens and dicksons gold bellflowers. Connecting to the asian theme sits a goddess with her offerings.



Garden of
Becky and Rob Henninger
 118 Youngwood Road

A "storybook heirloom" is how the Henningers' refer to their property nestled on the edge of Bird Park on a private, dead-end street in Mt. Lebanon. Rob was raised in the home which he and Becky were fortunate to purchase and raise their family, in the same idyllic surroundings.

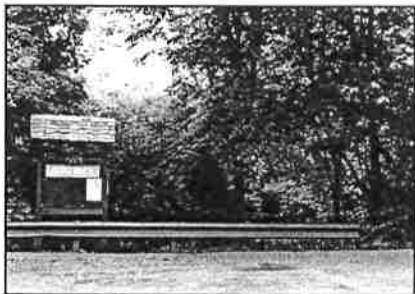
The garden palette includes mostly perennials, with the goal of having all-season color and fragrance. Multiple planting areas allow for both sun and shade varieties.

Blue Magoo Spruce, Forest Pansy and Rising Sun Redbud, Riverbirch, Coral Bark Maple, Weeping Birch, Crape Myrtle, Dwarf Cut leaf Japanese Maple, Ruby Spice Clethra, Henry's Garnet Sweetpire, Fringetree, Bloodgood Japanese Maples and Witchhazel serve to anchor the gardens and provide both summer and winter interest.

Every March, when it seems that winter will never end, the Witch Hazel offers hope of warmer days with frilly orange flowers and light fragrance. The hellebores, snowdrops, daffodils, hyacinth, crocus and grape hyacinth soon follow to usher in spring. A collection of early-mid-summer varieties -- phlox, iris, allium, coneflower, lavender, bee balm, astilbe and geum brighten the garden with vibrant color. Not to be outdone, the mid-late summer beauties salvia, roses, sedum, crocosima, rudbekia, gaillardia, mums, and the always-stunning perennial Hibiscus show off their colors. Interspersed throughout the gardens are annuals such as verbena, sweet potato vine, purple petunia, heliotrope, heavenly blue morning glory and moonflower to provide little pops of color and fragrance as the growing seasons transition.

The water feature and potted plants provide a peaceful focal point on the patio for quiet family evenings or larger celebrations with family and friends. Along with providing a water source for the many different birds, the pond is also a habitat for goldfish, frogs and toads who live among the water-mint, canna, creeping jenny, lobelia, water dock and pitcher plants.

The colorful window boxes on the front porch and side of the house complete the design of this garden retreat.



Mt. Lebanon Nature Conservancy Bird Park, parking lot on Beadling Road

Visit Bird Park at the Beadling entrance to see the results of the work of beloved, invasive-plant-eating goats hosted by Mt Lebanon Nature Conservancy, a community based, volunteer led non-profit organization. Also, appreciate the outcome of a large-scale invasive shrub control and reforestation project completed as a collaborative effort between MLNC and the Municipality that reclaimed over 6 acres of overgrown and unusable park space. The beautiful replanted area boasts over 40 native trees, including red oak, red and sugar maple, black gum, yellowwood, white pine, sycamore, serviceberry, Kentucky coffeetree and paw-paw. The understory is seeded with native grasses and wildflowers.

Bird Park is also the site of the MLNC School in the Park. For over 30 years, this volunteer-run program has brought all Mt Lebanon 3rd graders to the park for a fun filled and hands-on outdoor learning experience. SIP provides a leadership opportunity for local Mt Lebanon high school juniors as well. Each spring, the MLNC Board and volunteers refresh our community park trails for everyone to enjoy. Learn about nature hikes, park based programs, and volunteer opportunities sponsored by the Mt. Lebanon Nature Conservancy.



Mt. Lebanon Arboretum, Spalding Circle between Woodhaven Drive and Longuevue Drive

Spalding Circle, a parklet at the intersection of Washington Road, Woodhaven Drive and Longuevue Drive, contains 15 trees in the Mt. Lebanon Arboretum collection. Some of these trees are mature specimens, and others were planted in 2013 as an investment in the community's future appearance.

At this location, garden tour participants can see trees exhibiting different textures, forms and colors. Trees were placed with an eye toward their mature visual impact and with consideration of the growing conditions they prefer, but also to keep space open in the parklet for sledding and games. Some of the tree species are understory trees that stay relatively small and like indirect sunlight, while others prefer full sun and grow to great heights. You'll find spring-bloomers and others more noted for their bright fall colors.

Visit this stop on the 2018 Mt. Lebanon Public Library Garden Tour to talk with Parks Advisory Board members and others who can tell you about these 15 terrific trees:

- Douglas Fir
- Japanese Stewartia
- Eastern Red Oak
- "Princeton" American Elm
- Bald Cypress
- Dawn Redwood
- Pin Oak
- Cornelian Cherry Dogwood
- Yellowwood
- "Ivory Silk" Tree Lilac
- Burr Oak (I always spell as Bur Oak, but I guess either is acceptable)
- Common Horsechestnut
- Black Gum
- Kentucky Coffeetree
- "Profusion" Flowering Crabapple

As a bonus, you can learn more about Mt. Lebanon's newly accredited arboretum.

2018 GARDEN TOUR DIRECTIONS

★ Mt. Lebanon Public Library Gardens, 16 Castle Shannon Boulevard

Start your day with a visit to our lovely Mt. Lebanon Public Library Gardens, stop by our plant sale, the Friends of the Mt. Lebanon Public Library used bookstore "The Book Cellar" or enjoy a quick snack at one of the food trucks located in our parking lot.

● 409 and 410 Longridge Drive, 15243 Barbara & William Sabourin and Mary Starusko

Turn left onto Castle Shannon Boulevard from the library parking lot, take a left onto Washington Road, turn right onto Cochran Road, turn left onto Cedar Boulevard, then turn right onto Longridge. The gardens are at the end of the street just before you reach Bower Hill Road.

▲ 168 – 172 Lancaster Avenue, 15228 Leslie & Dave Hughes, Nancy & Michael Weismann and Anna & George Michalopoulos

Turn right onto Castle Shannon Boulevard from the library parking lot, turn left onto Shady Drive E., turn right onto Lancaster Avenue. The gardens are on your right at the end of the cul-de-sac.

+ Mt. Lebanon Arboretum, Spalding Circle, 15228

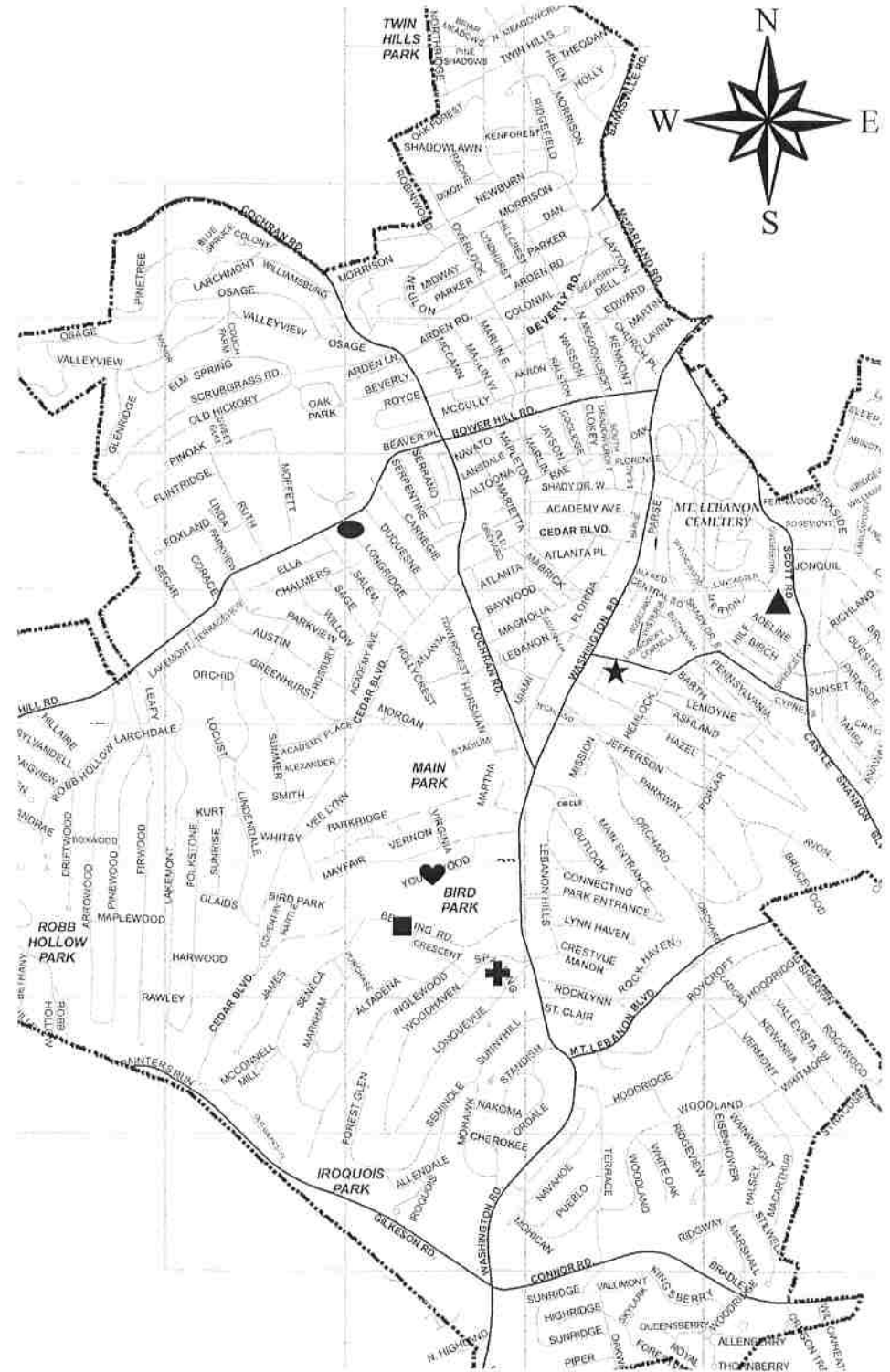
From the library turn left on Washington Road, continue to Woodhaven Drive turn right. The highlighted trees are in the park on the left.

♥ 118 Youngwood Road, 15228 Becky & Rob Henninger

Turn left onto Castle Shannon Boulevard from the library parking lot, turn left onto Washington Road continue to Mayfair Drive, turn right. Please park on Mayfair Drive and walk down Youngwood to the garden. Youngwood Road is the first left. This is a dead end street with no parking available. The garden will be on the right.

■ Mt. Lebanon Nature Conservancy, Bird Park, Beadling Road Parking Lot

Turn left onto Castle Shannon Boulevard from the library parking lot, turn left onto Washington Road, turn right onto Beadling. Follow Beadling Road to the Bird Park parking lot. The MLNC garden site is about 100 yards east of the parking lot, towards Washington Road. Volunteers will be in the lot to direct you to the area of the park highlighted by the Mt. Lebanon Nature Conservancy.



Bistro19

an urban bistro
in the heart of mt. lebanon



"Best Restaurant in Mt. Lebanon"
- TripAdvisor 2016

711 washington rd.
mt. lebanon

412.306.1919
www.bistro19.com



KELLY FRAASCH, LSS, SRES, RRS
REAL ESTATE AGENT

National & PA Real Estate Association Member

Multi-Million Dollar Producer

Specialize in Mt Lebanon properties

∞

Call/Text: 412.580.7665

Email: kellyfraasch@howardhanna.com

Web: kellyfraasch.howardhanna.com

"She is incredible to work with and makes you feel like you are her number one client." K. Black 12/22/2016



MT. LEBANON
NATURE
CONSERVANCY

Visit our Woodland Garden in Bird Park today.

Use the Beadling Road entrance across from Markham school and look for signs. The MLNC garden site is about 100 yards east of the parking lot, towards Washington Road. See you there!

LeboNature.org



PIERSON AND SCOTT, INC.

your local Independent Insurance Agency specializing in
Small Business and Home-based Business, Investment Property
Homeowners, Auto & Excess Liability

321 Castle Shannon Blvd, Mt. Lebanon, PA 15234
412-835-5660 www.piersonandscott.com

Rebecca Wanovich --- Steve Wanovich --- Cecile Usner
Ray Pierson --- Bruce Thomas --- Matt Scott --- Mike Pierson

Special Thanks to the Friends of Mt. Lebanon Public Library and the many wonderful
volunteers for bringing this fantastic Garden event to our community!

sesame inn

Chinese Restaurant and Lounge

www.sesameinn.com

Mt Lebanon
715 Washington Road
Pittsburgh, PA 15228
412-341-2555

North Hills
711 Browns Lane
Pittsburgh, PA 15237
412-366-1838

McMurray
2975 Washington Road
McMurray, PA 15317
724-942-2888

Open 7 Days - Lunch and Dinner, Pick-up and Delivery

Western Pennsylvania Slovak Cultural Association



Thank you for sharing the Library with us.



For information call (412) 531-2990



Castle Shannon **SHOP'n SAVE**

..... just right !

799 CASTLE SHANNON BLVD.
PITTSBURGH, PA 15234
PHONE: 412-561-1418

SUN - SAT 6am - 12 MIDNIGHT

Thank you to the Mt. Lebanon Public Library,
for all that you do for children and families!



Tender Care Learning Centers

The Early Education Professionals

www.EarlyEducationPros.org

PHOKIM88

Vietnamese Bistro & Sushi



vietnamese, japanese, chinese & thai
4100 Library Road • 412-531-8268 • PhoKim88.com
Mon.-Sat. 11am-10pm • Sun. 11am-9pm

10% OFF

your total sushi order
of \$15 or more

PHO KIM 88
412-531-8268

not valid with other offers
expires 07-31-2018

\$10 OFF

order of \$50 or more
mon-thurs
take-out only

PHO KIM 88
412-531-8268

not valid with other offers
expires 07-31-2018

\$5 OFF

any two lunch entrees
11am-3:30pm
dine in or take-out

PHO KIM 88
412-531-8268

not valid with other offers
expires 07-31-2018

\$10 OFF

any two dinner entrees
dine in or take-out

PHO KIM 88
412-531-8268

not valid with other offers
expires 07-31-2018



Expert Driven • Client Focused • Valuation Services

www.FranklinNova.com • 412-206-1415



412-257-1300

johnwilcoxplumbing.com

WE SERVICE:

Furnaces

Boilers

Water Heaters

Air Conditioners

Plumbing

Licensed and Insured

HP 4043

PA 105849

Roxane Agostinelli
Mt. Lebanon Resident, Realtor® & Gardner
for over 15 years!



kw
KELLER WILLIAMS

412-901-4073
www.RoxaneCAN.com



SOUTH HILLS
OBGYN ASSOCIATES, INC.

Robert C. Rankin, MD FACOG

1050 Bower Hill Road
Suite 206

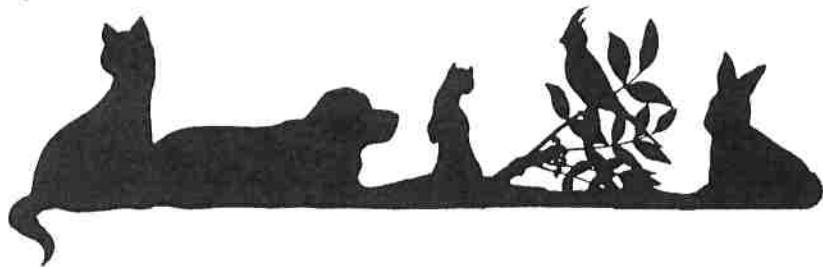
Mt. Lebanon, PA 15243

412-572-6127

www.shobgyn.com



DORMONT-MT, LEBANON- CASTLE SHANNON ROTARY
MEETS MONDAY AT NOON AT
THE MT. LEBANON UNITED METHODIST CHURCH
www.facebook.com/dmtlcsrotary



WEST LIBERTY ANIMAL HOSPITAL

David P. Dorn, V.M.D.

Small Animal Medicine and Surgery
Exotic Animal Medicine and Surgery
AAV Member

3055 W. Liberty Avenue
Pittsburgh, PA 15216

412-341-3383



Noelle Conover
noelleconover@gmail.com
412-571-0259
www.mattsmakerspace.org

Newcomers and Neighbors Club of Mt. Lebanon



www.mtlnewcomers.com

Whether you are a brand new or a long time resident, every woman who lives or works in Mt. Lebanon is welcome to join us. We are a women's social group that focuses on making new friends, having fun, and getting to know our community better. We encourage you to check us out on our website to see all that we have to offer you.

State Representative

Dan Miller

42nd Legislative District



650 Washington Road, Suite 102
Mt. Lebanon, PA 15228
(412) 343-3870 (412) 343-2050 (f)

www.pahouse.com/miller

@RepDanMiller

www.facebook.com/RepDanMiller

Proud to Sponsor...

Mt. Lebanon Public Library
Annual Garden Tour



WesBanco

Washington Road Office
728 Washington Road • 412.561.2470
Beverly Road Office
312 Beverly Road • 412.571.1333

1.800.905.9043 • wesbanco.com
WesBanco Bank, Inc. is a Member FDIC

Friends of the Mt. Lebanon Public Library

Salute the Garden Tour



The Friends is a non-profit, volunteer organization helping the library provide a wide range of services—from programs and books to computers and furniture.

The Friends raise much-needed funds through The Book Cellar, the Library's used bookshop, membership dues and other fundraising social events.

Anyone may join the Friends and support the library's mission. Your time, talent and enthusiasm will keep our library vital.

Please join today (single or family).

Name _____

Address _____

Telephone _____

Email _____

Newsletter delivery: ☐ mail only ☐ e-mail only ☐ both
☐ none (We do not wish to receive the letter)

Enclosed is my check, made payable to Friends of the Mt. Lebanon Public Library, for the following amount (minimum to join \$15):

☐ \$500 ☐ \$250 ☐ \$100 ☐ \$50

☐ \$25 ☐ \$15 ☐ Other amount of Gift

Mail to: Friends of the Mt. Lebanon Public Library
16 Castle Shannon Blvd.
Pittsburgh, PA 15228-2252

WAYS TO CONNECT TO THE LIBRARY

Contact Us

Send us your comments or questions, any hour, day or night.
www.mtlebanonlibrary.org/27/about

Email Program News

Visit our website at www.mtlebanonlibrary.org and click on "notify me" then select the newsletter(s) that you'd like to receive.

Text-a-librarian

Text "start" to 412-685-4004 to get started.

Mobile Library

Search our redesigned website that offers full functionality to mobile devices. www.mtlebanonlibrary.org

Friends' Library Newsletter

Free by mail or email with a membership to the Friends.
www.mtlebanonlibrary.org/230/Friends-of-Mt-Lebanon-Public-Library

KidsRead News Flash

Weekly updates on children's library news and programs.
Sign up at www.mtlebanonlibrary.org/Kids

Digital Media

Download eBooks, magazines, online music, and videos to your mobile reading devices, phones, or computers for free.
www.mtlebanonlibrary.org/digitalmedia



Flickr

See pictures of library programs and events.
www.flickr.com/photos/mtlebanonlibrary/sets



Twitter

adult library: <http://twitter.com/MtLebLibrary>
children's library: <http://twitter.com/MLPLKids>



Facebook

Look for Mt. Lebanon Public Library.



YouTube

Look at videos from Mt. Lebanon Public Library on YouTube.
www.youtube.com/MtLebanonLibrary

Shortcuts to all our social media accounts can be found on the bottom of our website.

: more great reads

Green Thumbs, Budding Botanists & Landscape Lovers
@ Mt Lebanon Public Library

BOOKS

- The New Seed-Starters Handbook | Nancy Bubel | 635.0421 Bub
Leaf Supply: A Guide to Keeping Happy Houseplants | Lauren Camilleri | 635.965 Cam
Raised Row Gardening: Incredible Organic Produce with No Tilling and Minimal Weeding | Jim & Mary Competti | 635.0484 Com
Mindful Thoughts for Gardeners: Sowing Seeds of Awareness | Clea Danaan | 635 Dan
How to Window Box: Small-Space Plants to Grow Indoors or Out | Chantal Aida Gordon | 635.9 Gor
Butterfly Gardening: The North American Butterfly Association Guide | Jane Hurwitz | 635.96 Hur
Straw Bale Solutions: Creative Tips for Growing Vegetables in Bales at Home, in Community Gardens, and Around the World | Joel Karsten | 635 Kar
A Year in the Garden: 365 Inspirational Gardens and Gardening Tips | Gisela Keil | 635 Kei
Garden Style: Inspirational Styling for Your Outside Space | Selina Lake | 635.9 Lak
Planting for Honeybees: The Grower's Guide to Creating a Buzz | Sarah W. Lewis | 639.92 Lew
The Garden in Every Sense and Season | Tovah Martin | 635 Mar
New Landscaping Ideas that Work | Julie Moir Messervy | 712 Mes
Grow What You Love: 12 Food Plant Families to Change Your Life | Emily Murphy | 635 Mur
Discoveries in the Garden | James Nardi | 635 Nar
The Suburban Micro-Farm: Modern Solutions for Busy People | Amy Stross | 635 Str
The Flower-Powered Garden: Supercharge Your Borders and Containers with Bold, Colourful Plant Combinations | Andy Vernon | 635.9 Ver
Heirloom Vegetable Gardening: A Master Gardener's Guide to Planting, Seed Saving, and Cultural History | William Woys Weaver | 635 Wea

PERIODICALS

American Rose
Better Homes and Gardens
Birds and Blooms
Fine Gardening
Garden Gate
Gardens Illustrated
HGTV Magazine
Horticulture
Mother Earth Living
Pennsylvania Gardener

DATABASES, WEBSITES, & ORGANIZATIONS

Fine Gardening www.finegardening.com
Garden Club of Allegheny County www.gcacpgh.org
GreenFile Database www.mtlebanonlibrary.org
iConserve Pennsylvania www.iconservepa.org
Kitchen Gardeners International www.kgi.org
National Gardening Association www.garden.org
Native Plant Database www.wildflower.org/plants
Pennsylvania Flora Project www.paflora.org
Pennsylvania Native Plant Society www.pawildflower.org

Thanks to funding from
Matt's Maker Space
—created to honor the
memory of Matt
Conover, who lost a
courageous battle with
cancer in 2002—
Mt. Lebanon Public
Library will be offering
a year of science, technol-
ogy, engineering, art, and math
(STEAM) programs.



Coding Camp

1:30 pm, Monday-Friday, June 25-29
A week-long coding camp for kids going into
grades 3-5.

Metalsmithing Artist in Residency Project with Pittsburgh Center for the Arts

3 pm, Monday-Friday, June 29-July 27.
Students entering 8-9 grades

Math Lab

1:30 pm, Monday-Thursday, July 30-
August 2.
A four day math camp for rising 5th and
6th graders. Play math games such as 24 and
more.

Math Mites Mini Camp

10 am and 1 pm, August 7-9
A three-day math camp for kids entering
2nd-4th grade.

Make a Pinhole Camera

1 pm, Monday, August 13 &

12:30 pm, Tuesday, August 14
For kids going into 6th to 8th grade
Make a pinhole camera, take photos, and
develop the film. Includes a field trip to
the Manchester Craftsman's Guild.

Raku Pottery with Manchester Craftsman's Guild

9 am, Wednesday, August 15 and
9:30 am, Wednesday, August 16
For kids going into 6th to 8th grade
Build a pottery piece and then trim, glaze,
and fire it. Includes a field trip to the Man-
chester Craftsman's Guild.

Rapid Prototyping with Heinz History Center

Wednesday, August 22
1 pm: Kids in grades 1 and 2.
2:30 pm: Kids in grades 3-5
Design and develop a rapid prototype to
solve a historically inspired challenge.

Registration required for all classes.
Check www.mtlebanonlibrary.org
for details and to register.



Lisa See, 2018



Joyce Carol Oates, 2017



A. McCall Smith, 2016



Stewart O'Nan, 2015



Lisa Scottoline, 2014

Help Our Speaker Series Grow!

Your support will ensure that the Mt. Lebanon Public Library Speaker Series continues to bring you the authors you love!



Donate now at mtlebanonlibrary.org/speakersupport or send checks to Mt. Lebanon Public Library

Donor Levels:

\$50 – Sustainer: Early ticketing information for all Speaker Series events. Inclusion in the Donor listing in program books and on website.

\$100 – Patron: Early ticketing information for all Speaker Series events. Inclusion in the Donor listing in program books and on website.

\$250 – Champion: Early ticketing information for all Speaker Series events. Inclusion in the Donor listing in program books and on website. Special donor seating section at Speaker Series events.

\$500 – Visionary: Early ticketing information for all Speaker Series events. Inclusion in the Donor listing in program books and on website. Special donor seating section at Speaker Series events. Free VIP ticket and autographed copy of speaker's book.

Be among the first to know who our 2019 speaker will be by donating today!

MT. LEBANON
PUBLIC LIBRARY **more**

"Thank you to
our advertisers
for supporting
the
Mt. Lebanon
Public Library
Garden Tour"

FLEXIBLE
COLLABORATIVE
PRODUCTIVE
WORK ENVIRONMENTS

FROM PITTSBURGH'S
MOST EXPERIENCED OFFICE FURNITURE SOURCE



Since 1960
Mt. Lebanon Office
FURNITURE & INTERIORS
www.mtleboffice.com
412-344-6300

1817 Banksville Road
Pittsburgh, PA 15216-3199

We believe in
GROWING
THINGS
the right
way, too.

When you nurture, protect and care for something, it blossoms. We provide counseling and educational programs for teens and their families to help them grow to their full potential. To learn more, visit outreachteen.org.

Outreach
Teen & Family Services, Inc.
Counseling. Care. Connection.

ROLIER MONEY

5 \$5 OFF
Your next purchase of \$30 or more

Must be presented at time of purchase.
Not valid on the purchase of gift certificates.
Not valid on any prior purchases.
Cannot be combined with any other coupons or discounts.
Limit: one per sale.

Offer Expires: 7/31/18

Helpful Herman

Rollier's
EST. 1951

600 Washington Rd. • Mt. Lebanon, PA 15228
Open Mon-Sat: 9-9 • Sunday: 10-5
(412) 561-0922

FIVE DOLLARS



**Thank you to the following companies
who have supported the 28th Annual
Mt. Lebanon Public Library Garden Tour**

Berkshire Hathaway Home Prudential Preferred Realty	inside back cover
Baptist Homes	page 39
Bill Few Associates	page 8
Bistro 19	page 24
Black Lamb Consignments	page 1
Mt. Lebanon Office Suites	page 40
Castle Shannon Shop 'n Save	page 26
Coldwell Banker Realty	page 10
Dormont, Mt. Lebanon, Castle Shannon Rotary	page 30
Fort Pitt Capital Group, Inc.	back cover
Horhut Tree Experts	page 12
Howard Hanna	inside front cover
John Wilcox Plumbing & Heating	page 28
Keller Williams Realty South Pittsburgh	page 28
Howard Hanna, Kelly Fraasch	page 24
La Te Da Salon	page 9
Laughlin Memorial Chapel	page 11
Matt's Maker Programming	page 35
Matt's Maker Space	page 30
Mt. Lebanon Nature Conservancy	page 25
Mt. Lebanon Office Furniture & Interiors	page 37
Mt. Lebanon Public Library Speaker Series	page 36
Newcomers and Neighbors of Mt. Lebanon	page 31
Outreach Teen & Family Services	page 37
Pho Kim 88	page 27
Pierson and Scott Insurance	page 25
Rollier Hardware	page 37
Sesame Inn	page 26
South Hills OBGYN Associates	page 29
St. Clair Hospital	page 2
State Representative Dan Miller	page 31
Tender Care Learning Centers	page 27
The Franklin Nova Group	page 28
WesBanco Bank, Inc.	page 31
West Liberty Animal Hospital	page 30
Western PA Slovak Cultural Association	page 26

**Join us for our 4th annual BHS Senior Health & Wellness Fair
@ the Galleria of Mt. Lebanon on Tuesday, September 18, 2018.**

Celebrating

SERVICE IN THE MT. LEBANON COMMUNITY



*L*ike the Mt. Lebanon Public Library, Baptist Homes Society has provided outstanding service to our community for many years. Though times have changed, our commitment to excellence has not. Within our two senior communities you'll find the latest therapies and unparalleled wellness programming. Whether you're looking for short-term rehabilitation or long-term senior living, our person-centered approach will help you live your best possible life.

Baptist HOMES SOCIETY

- | | |
|--------------------|-----------------|
| INDEPENDENT LIVING | MEMORY SUPPORT |
| REHABILITATION | SKILLED NURSING |
| PERSONAL CARE | RESPIRE CARE |

BAPTIST HOMES

412-563-6550

www.baptisthomes.org

PROVIDENCE POINT

412-489-3560

www.providencepoint.org

Mt. Lebanon Office Suites
733 Washington Road, Mt. Lebanon
Prime Storefront Available

Class A Professional space available
 500-2,315 square feet



Attractive rental rates, professional cleaning staff,
 Uptown business district, 2 blocks from T.

Call (412) 344-9900, x226

or visit our website at www.mtlebanonofficesuites.com

Real Estate Agents
Who Make a Real Difference!



Barbara Baker Team*



Lynn Banbury



Magen Bedillion &
 Laurissa Mathews



Justin Christy



Frank Conroy



Brian and Karen
 Cummings Team**



Bob Dini



Dinesh Gupta



Kathy Hallberg



George Herrington



Lori Maffeo



Elvn Marotta



Bobbie Mikita



Barbara
 Kurlys-Miller



Christina Watson &
 Lisa Muravich



Jennifer Orcaugh



Heather Orstein



Joann Robb



Michele Schocker &
 Ruth Weigers



Donna Snelfsky



Katy Stanko



Chuck Wallace



Tony Mete, Manager

Let us help you find your way home!
 Call one of our award-winning
 Mt. Lebanon Regional sales associates



BERKSHIRE
HATHAWAY
 HomeServices

The Preferred
Realty

412.833.7700
 1679 Washington Road
www.ThePreferredRealty.com

* Barbara Baker Realtor®, Stephanie Spahn, Dan Colazzi, Kim Koehler, Clara Higgins (not pictured),
 Fabienne Pato-Benson, Kristen Shaw and Lindsey Schaffer - All licensed assistants
 ** Brian and Karen Cummings Team, Nawala Swaker - licensed assistant

©2008 BHH Affiliates, LLC. An independently owned and operated franchise of BHH Affiliates, LLC. Berkshire Hathaway HomeServices and Berkshire Hathaway HomeServices are registered
 service marks of HomeServices of America, Inc. & Equal Housing Opportunity. Information not verified or guaranteed. If your home is marketed listed with a Realtor, this is not a solicitation.



FORT PITT®
CAPITAL GROUP

A Proud Supporter of
**The Mt. Lebanon
Public Library**

Contact us at (412) 921-1822

Read our blog at www.fortpittcapital.com/blog

Follow us on Twitter @FortPittCapital

TRUST  INSIGHT  VALUE

YOUR FUTURE IS OUR FOCUS